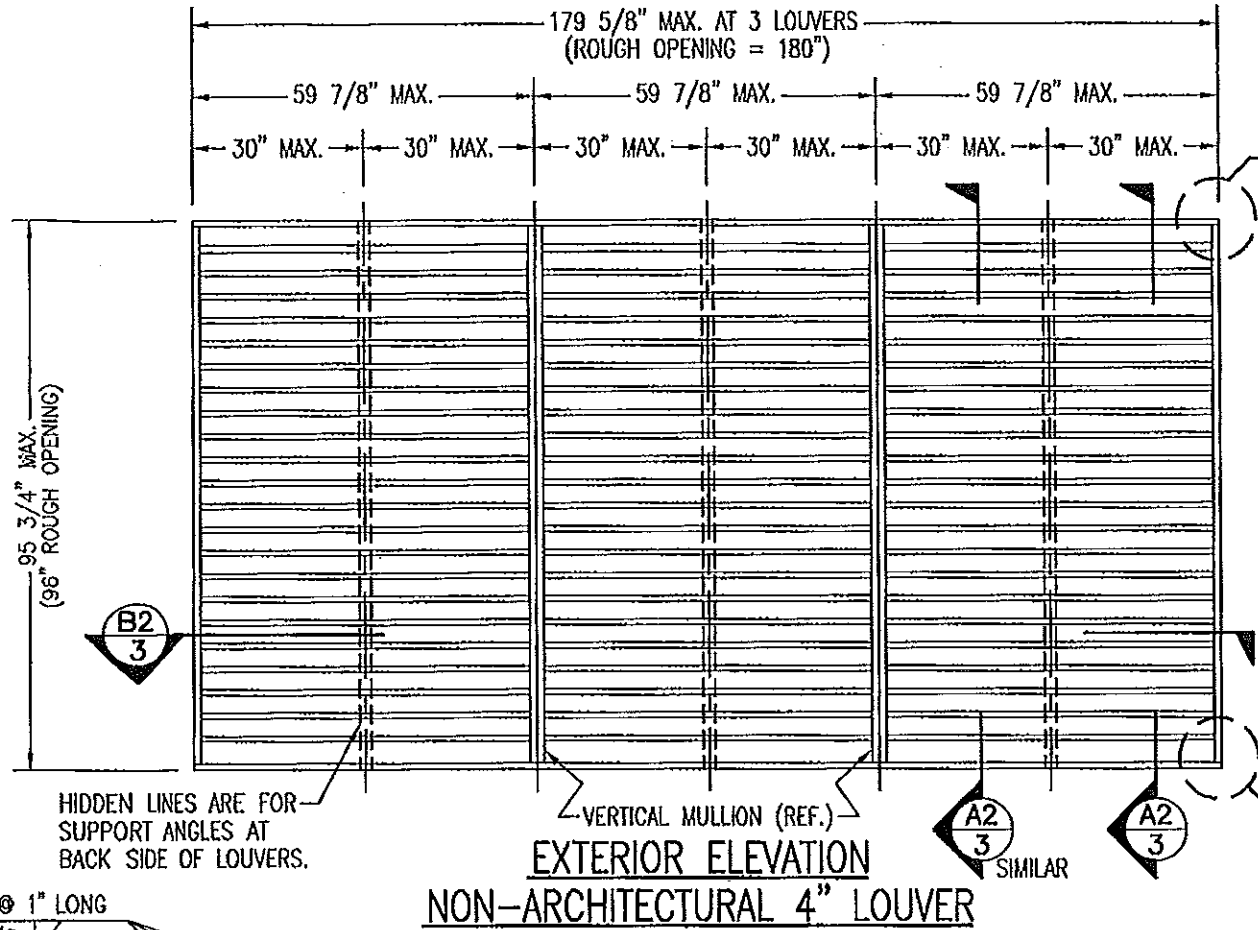


EXTERIOR ELEVATION
ARCHITECTURAL 4" LOUVER

SCALE: 3/8"=1'-0"

NOTE: THIS LOUVER SYSTEM MAY CONSIST OF AN UNLIMITED NUMBER OF SECTIONS PROVIDING EACH SECTION DOES NOT EXCEED 59 7/8" X 95 3/4" IN SIZE.



EXTERIOR ELEVATION
NON-ARCHITECTURAL 4" LOUVER

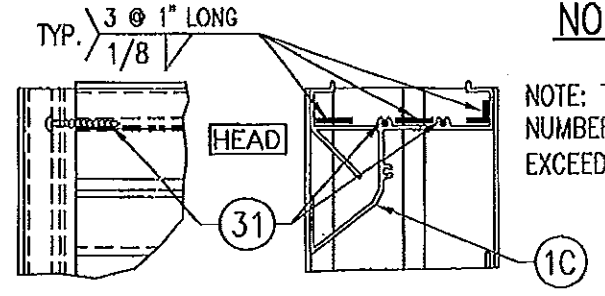
SCALE: 3/8"=1'-0"

NOTE: THIS LOUVER SYSTEM MAY CONSIST OF AN UNLIMITED NUMBER OF SECTIONS PROVIDING EACH SECTION DOES NOT EXCEED 59 7/8" X 95 3/4" IN SIZE.

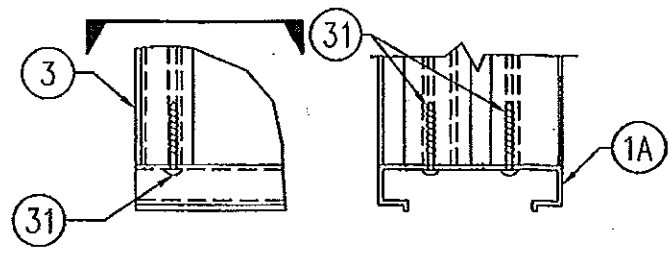
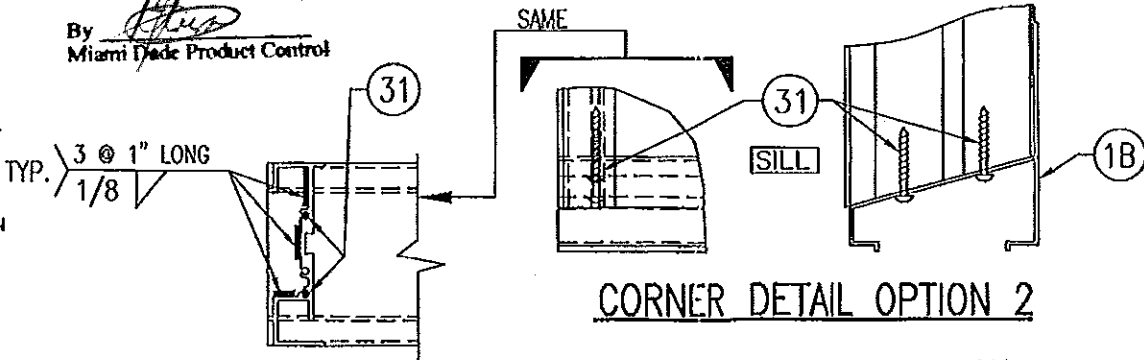
GENERAL NOTES:

1. THESE LOUVER SYSTEMS HAVE BEEN TESTED, ANALYZED & APPROVED FOR DESIGN PRESSURES NOT TO EXCEED THOSE SHOWN IN THE "ALLOWABLE DESIGN PRESSURE TABLE(S)".
2. OPENINGS MUST BE PROPERLY DESIGNED & CONSTRUCTED TO TRANSFER WIND LOADS TO THE STRUCTURE.
3. ALL HARDWARE & FASTENERS SHALL BE IN ACCORDANCE WITH THESE DRAWINGS & SHALL NOT VARY UNLESS SPECIFICALLY MENTIONED ON THE DRAWINGS. SPECIFIED ANCHOR EMBED TO BASE MATERIAL SHALL BE BEYOND WALL FINISH OR STUCCO.
4. THE DETAILS & SPECIFICATIONS SHOWN HEREIN REPRESENT THE PRODUCTS TESTED & PROPOSED FOR IMPACT, CYCLIC & UNIFORM STATIC AIR PRESSURE TESTING IN CONFORMANCE WITH THE FLORIDA BUILDING CODE PROTOCOLS TAS-201, 202 & 203 FOR LARGE MISSILE IMPACT LOUVERS.
5. THESE LOUVER SYSTEMS HAVE BEEN DESIGNED IN ACCORDANCE WITH AND MEET THE REQUIREMENTS OF THE FLORIDA BUILDING CODE (FBC) INCLUDING HIGH VELOCITY HURRICANE ZONES (HVHZ).
6. ALL ANCHORS SECURING LOUVER FRAME TO PRESSURE TREATED BUCKS OR WOOD FRAMING SHALL BE CAPABLE OF RESISTING CORROSION CAUSED BY THE PRESSURE TREATING CHEMICALS IN THE WOOD.
7. DETERMINE THE POSITIVE & NEGATIVE DESIGN LOADS TO USE WHEN REFERENCING THESE DOCUMENTS IN ACCORDANCE WITH THE GOVERNING CODE AND GOVERNING WIND VELOCITY. FOR WIND LOAD CALCULATIONS IN ACCORDANCE WITH THE FLORIDA BUILDING CODE, A DIRECTIONALITY FACTOR OF $K_d = 0.85$ MAY BE APPLIED PER THE ASCE 7 STANDARD.
8. NO INCREASE IN ALLOWABLE STRESS HAS BEEN USED IN THE CERTIFICATION OF THIS PRODUCT. WIND LOAD DURATION FACTOR $C_d = 1.6$ WAS USED FOR WOOD SCREW ANALYSIS ONLY.
9. MATERIALS, INCLUDING BUT NOT LIMITED TO STEEL SCREWS, THAT COME INTO CONTACT WITH OTHER DISSIMILAR MATERIALS SHALL MEET THE REQUIREMENTS OF FLORIDA BUILDING CODE CHAPTER 20.
10. MAXIMUM ALLOWABLE INDIVIDUAL PANEL SIZE = 59 7/8" X 95 3/4".
11. MAXIMUM ASSEMBLY SIZE = UNLIMITED WIDTH; UP TO 95 3/4" HEIGHT.
12. ASSEMBLIES/SECTIONS MAY BE STACKED VERTICALLY PROVIDING A STRUCTURAL SUPPORT IS DESIGNED & INSTALLED BY OTHERS TO SUPPORT ALL LOADS TRANSFERRED FROM THE LOUVER ASSEMBLY.
13. MAXIMUM UNSUPPORTED BLADE LENGTH SHALL NOT EXCEED 30"
14. ALL FASTENERS SHALL BE PLATED STEEL OR 304 STAINLESS STEEL.
15. SPECIFIED SUBSTRATES REQUIREMENTS:
CONCRETE: MIN. 3000 PSI
MASONRY: MIN. C90 CMU
WOOD: MIN. GRADE 2; G = 0.55
STEEL: MIN. 1/8" THICK A36 (36 KSI)
16. THIS SYSTEM HAS NOT BEEN TESTED FOR WATER INFILTRATION RESISTANCE & IS NOT A WATER RESISTANT SYSTEM.

PRODUCT RENEWED
to comply with the Florida Building Code
Acceptance No 13-0422-09
Expiration Date 07/27/2018
By [Signature]
Miami Trade Product Control



CORNER DETAIL OPTION 2



CORNER DETAIL OPTION 1
(SILL CORNER SHOWN; HEAD IS MIRRORED IMAGE)

MAX. ALLOWABLE DESIGN WIND PRESSURE

POSITIVE	NEGATIVE
150 PSF	150 PSF

NOTE: SEE LOAD TABLE ON SHEET 7 FOR VARIATIONS OF PRESSURES WITH RESPECT TO PANEL WIDTH & CLIP SPACING.

THESE DRAWINGS ARE APPLICABLE ONLY TO THE PRODUCT SPECIFIED. THEY MAY NOT BE USED FOR THE ASSEMBLY AND/OR INSTALLATION OF ANY OTHER PRODUCT NOR MAY THEY BE USED FOR RATIONAL AND/OR LOCAL APPROVAL OF ANY PRODUCT NOT PRODUCED BY THE MANUFACTURER STATED ON THESE DRAWINGS.

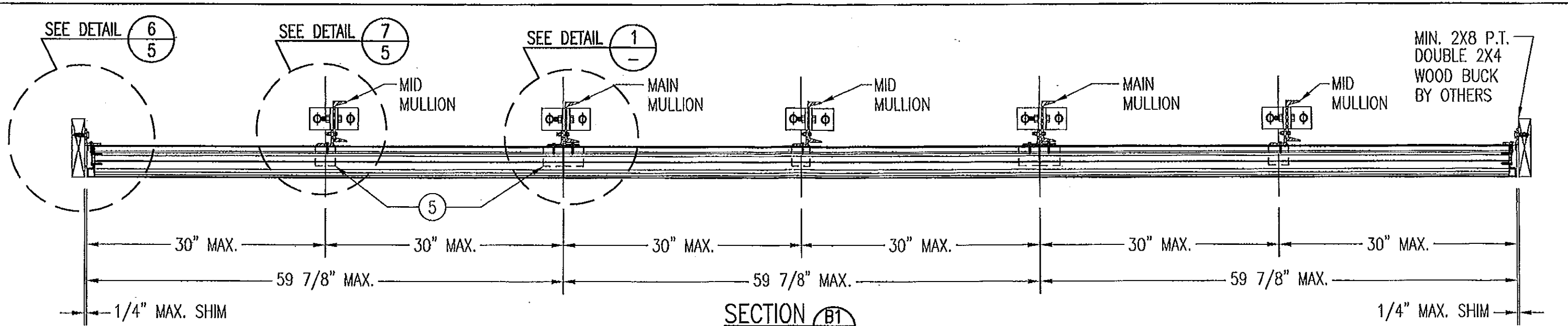
PRODUCT REVISED
to comply with the Florida Building Code
Acceptance No 11-1117-07
Expiration Date 07/27/2013
By [Signature]
Miami Trade Product Control

REVISION	DATE	DRN	CHK	APPD
A1	01/29/03	K.P.S.	W.W.S.	
A2	04/29/03	K.P.S.	W.W.S.	
B1	04/17/08	W.R.M.	W.W.S.	
C1	11/08/11	W.R.M.	W.W.S.	

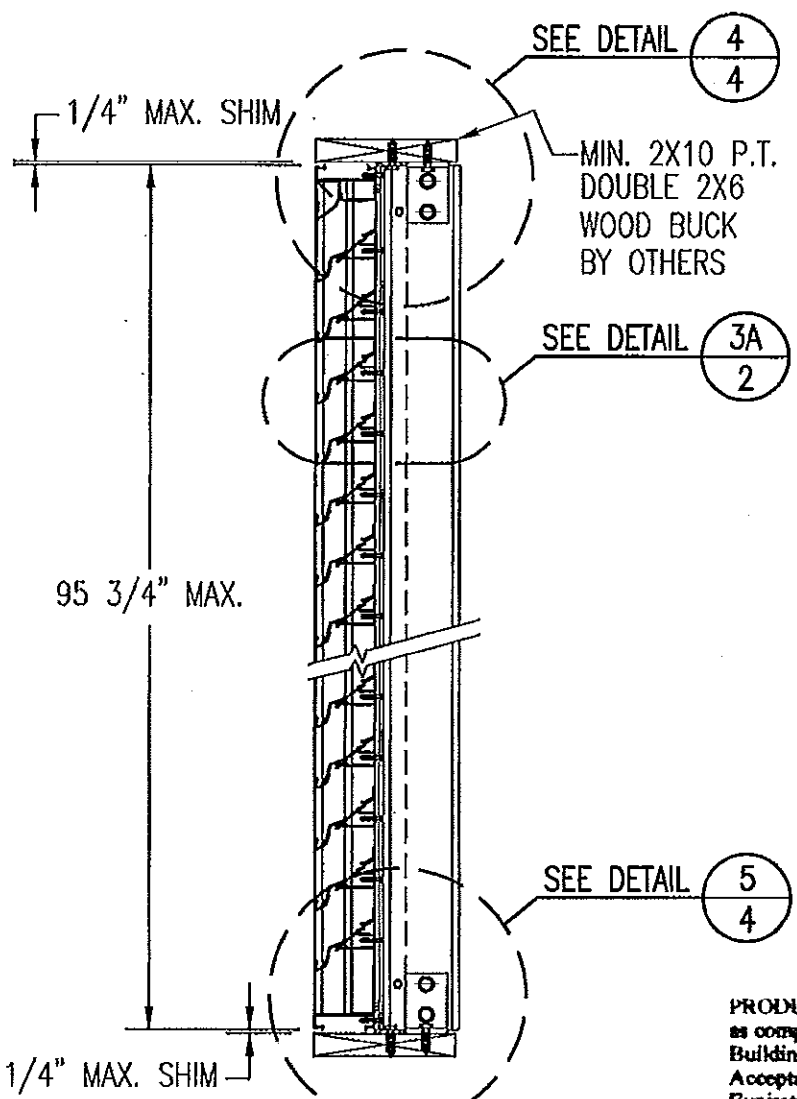
WARREN W. SCHAEFER
LICENSE
No. 44135
STATE OF FLORIDA
PROFESSIONAL ENGINEER
NOV 08 2011
WARREN W. SCHAEFER, P.E.
STRUCTURAL ENGINEER
P.E. No. 44135
WARREN W. SCHAEFER ENGINEERING
& CONSULTING, P.A. (CA 6809)
STRUCTURAL CONSULTING ENGINEERS
7480 150TH COURT NORTH
PALM BEACH GARDENS, FL 33418
PHONE: 561-744-3424

ARROW UNITED INDUSTRIES
A Division of Mestek, Inc.
450 RIVERSIDE DRIVE - P.O. BOX 69
WYALUSING, PA 18853
PHONE 570-746-1888; FAX 570-746-9286
EA-22 TEST LOUVER
ARCHITECTURAL & NON-ARCHITECTURAL LOUVER
ELEVATIONS & NOTES

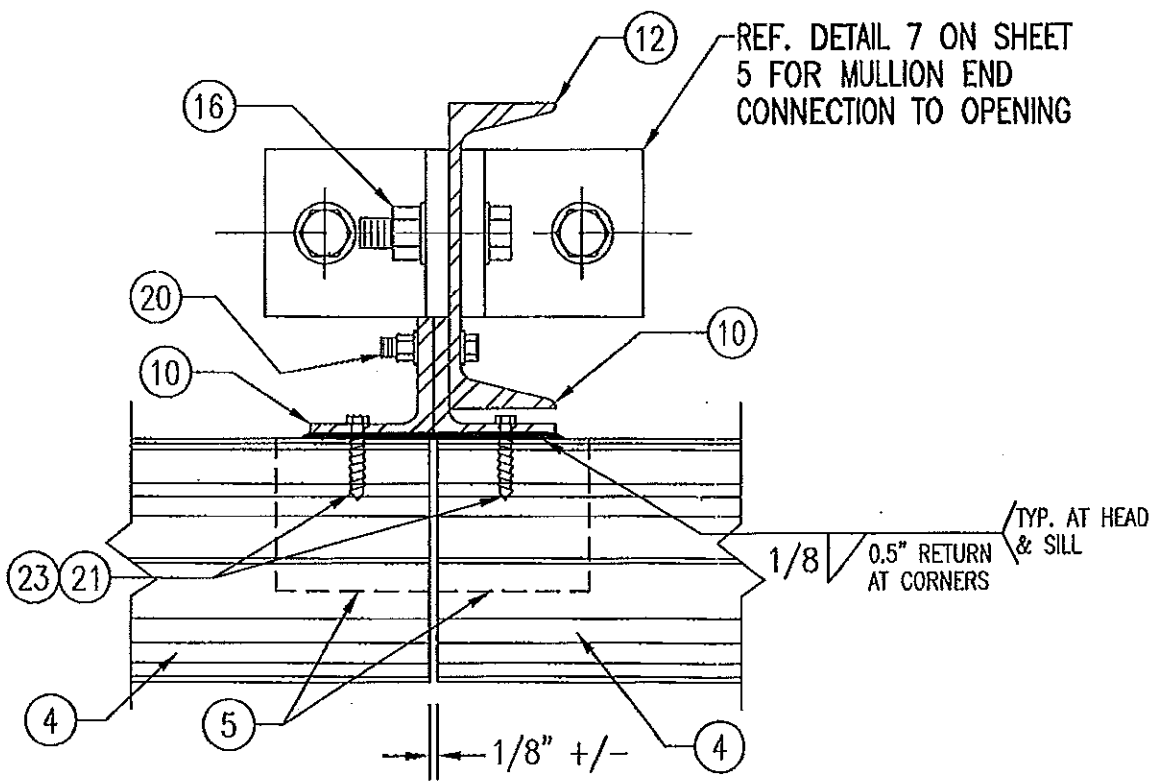
CKD.BY	APPD.BY	W.W.S.	SHEET: 1 of 7
DRN.BY	W.W.S.	DWG. NO.	35972-4
DATE	06-16-00		REV. C



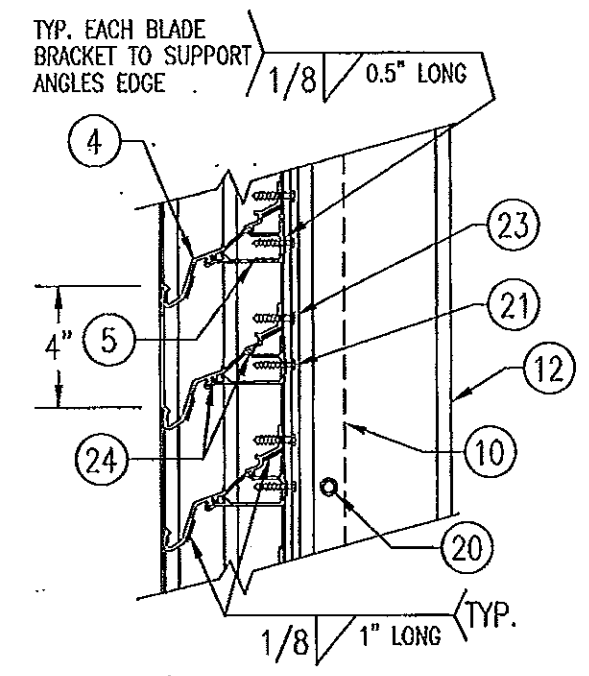
SECTION B1
SCALE: 1"=1'-0"
ARCHITECTURAL LOUVER



SECTION A1
SCALE: 1"=1'-0"
ARCHITECTURAL LOUVER



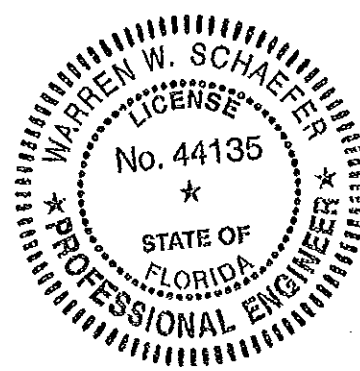
DETAIL 1
SCALE: 1/3 FULL
ARCHITECTURAL LOUVER



DETAIL 3A
SCALE: 2"=1'-0"
TYP. AT ALL MULLIONS THIS SHEET

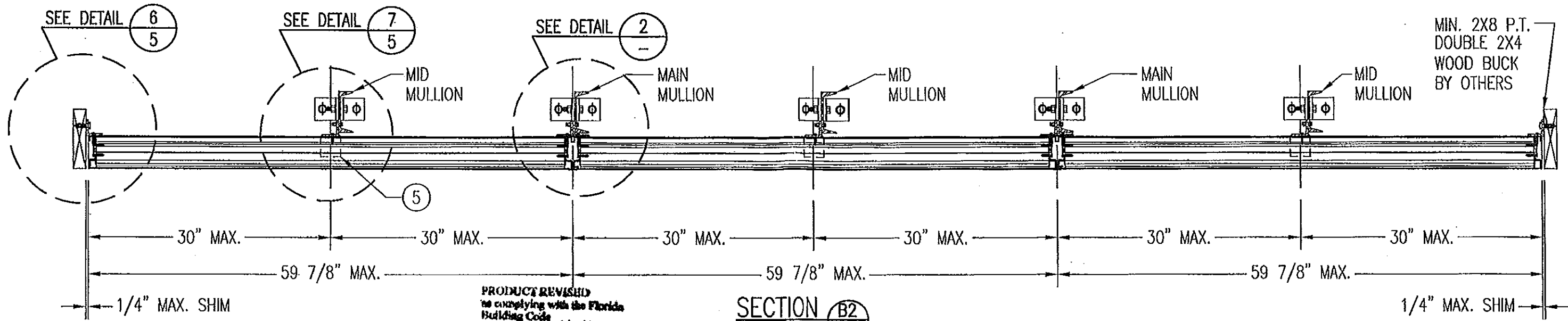
PRODUCT RENEWED
as complying with the Florida
Building Code
Acceptance No. 13-042209
Expiration Date 07/27/2018
By: [Signature]
Miami Dade Product Control

PRODUCT REVISED
as complying with the Florida
Building Code
Acceptance No. 11-111707
Expiration Date 07/27/2013
By: [Signature]
Miami Dade Product Control



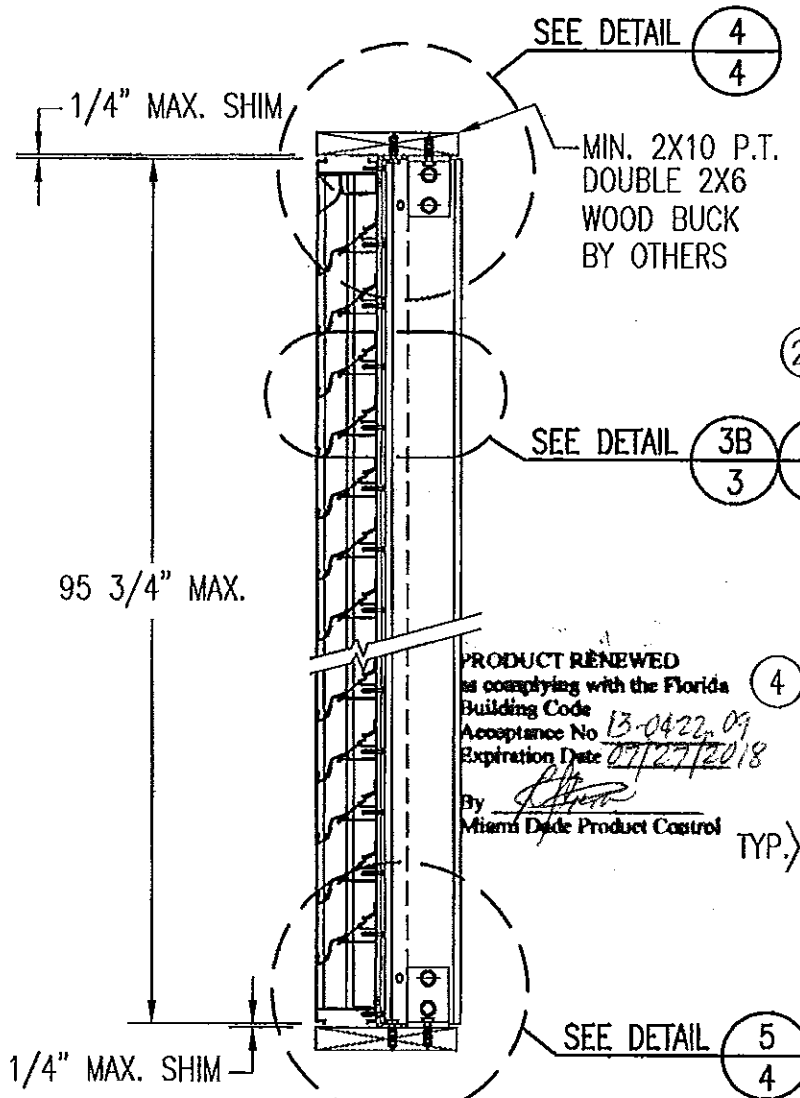
NOV 08 2011
WARREN W. SCHAEFER, P.E.
STRUCTURAL ENGINEER
P.E. No. 44135
W. W. SCHAEFER ENGINEERING
& CONSULTING, P.A. (CA 6809)
STRUCTURAL CONSULTING ENGINEERS
7480 150TH COURT NORTH
PALM BEACH GARDENS, FL 33418
PHONE: 561-744-3424

REVISION	DATE	DRN	CK	APPD
ARROW UNITED INDUSTRIES A Division of Mestek, Inc. 450 RIVERSIDE DRIVE - P.O. BOX 69 WYALUSING, PA 18853 PHONE 570-746-1888; FAX 570-746-9286 EA-22 TEST LOUVER ARCHITECTURAL LOUVER SECTIONS & DETAILS				
CKD.BY	APPD.BY	W.W.S.	SHEET: 2 of 7	
DRN.BY	W.W.S.	DWG. NO.	35972-4	
DATE	06-16-00	REV.	C	



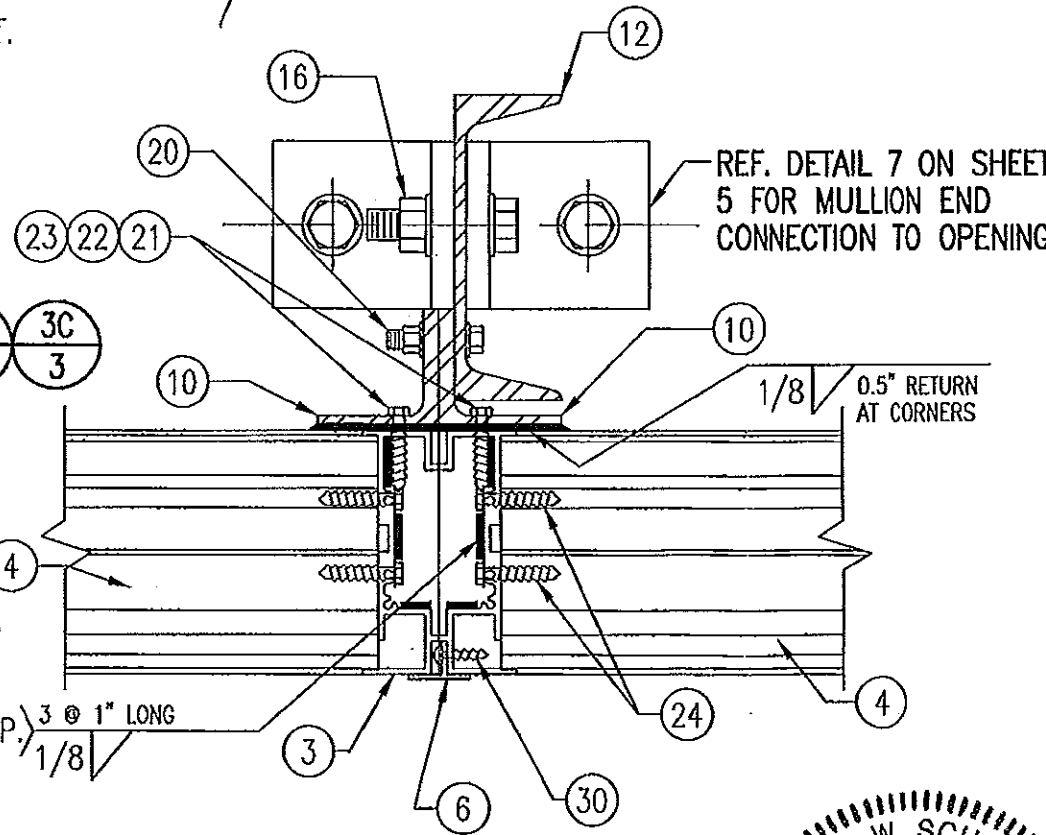
PRODUCT REVISED
to comply with the Florida
Building Code
Acceptance No. 11-1117.07
Expiration Date 07/27/2013
By Miami Dade Product Control

SECTION B2
SCALE: 1"=1'-0"
NON-ARCHITECTURAL LOUVER

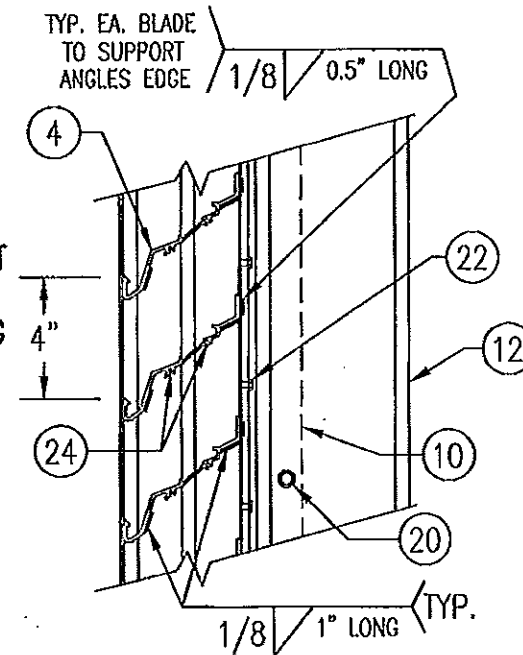


PRODUCT RENEWED
to comply with the Florida
Building Code
Acceptance No. 13-0422.07
Expiration Date 07/27/2018
By Miami Dade Product Control

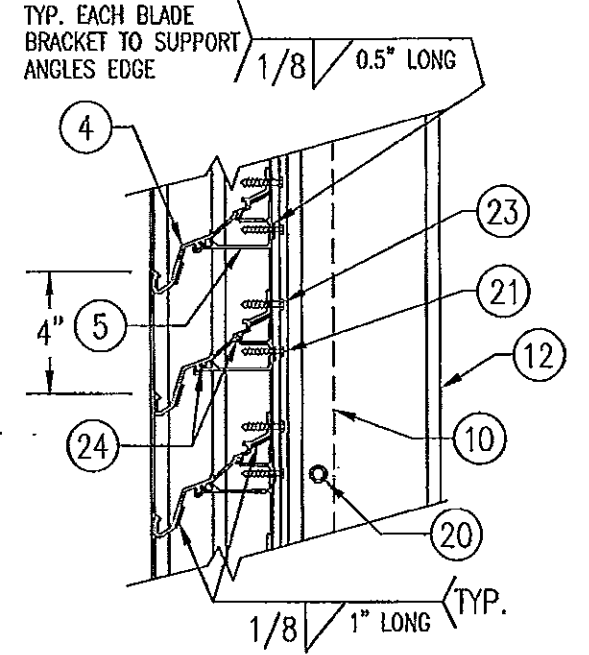
SECTION A2
SCALE: 1"=1'-0"
NON-ARCHITECTURAL LOUVER



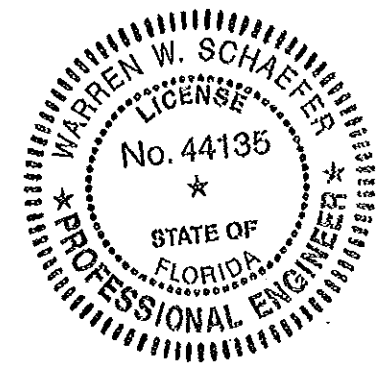
DETAIL 2
SCALE: 2"=1'-0"
NON-ARCHITECTURAL LOUVER
NOTE: SIDE JAMBS ARE ADDITIONALLY FASTENED TO THE SILL & HEAD WITH 2 NO. 7 X 1" SMS THROUGH SILL & INTO JAMB SPLINES.



DETAIL 3B
SCALE: 2"=1'-0"
TYP. AT MAIN MULLIONS THIS SHEET

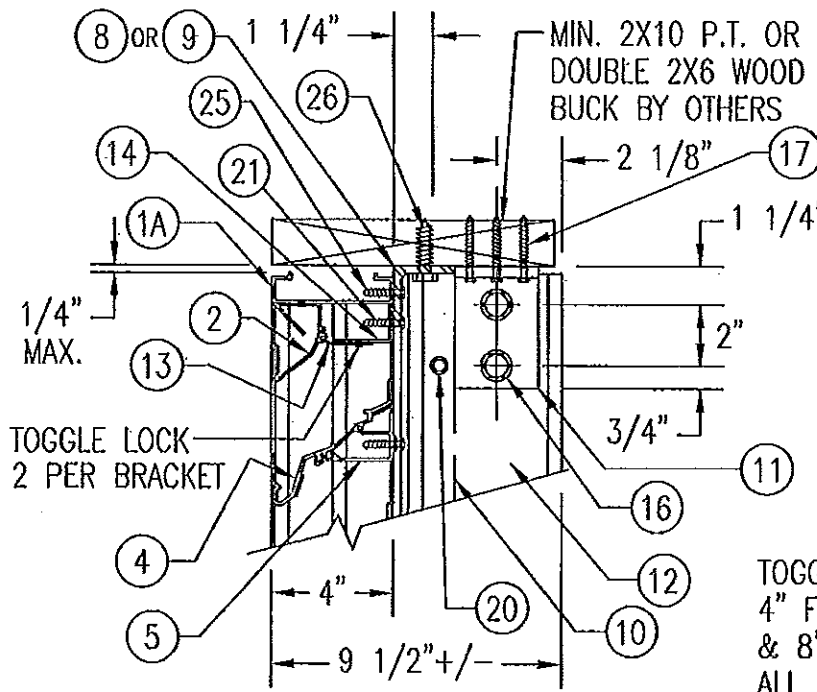


DETAIL 3C
SCALE: 2"=1'-0"
TYP. AT ALL MID-SPAN MULLIONS THIS SHEET



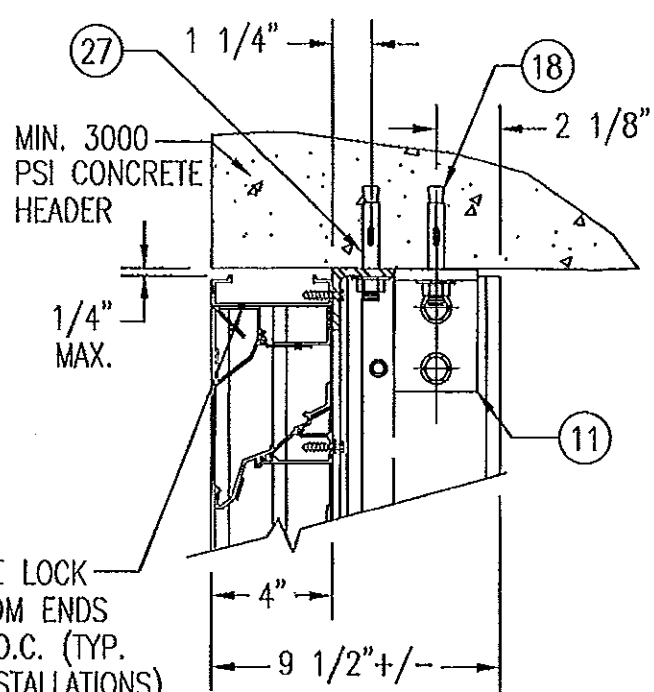
NOV 08 2011
WARREN W. SCHAEFER, P.E.
STRUCTURAL ENGINEER
P.E. No. 44135
W. W. SCHAEFER ENGINEERING & CONSULTING, P.A. (CA 6809)
STRUCTURAL CONSULTING ENGINEERS
7480 150TH COURT NORTH
PALM BEACH GARDENS, FL 33418
PHONE: 561-744-3424

REVISION		DATE	DRN	APPD
ARROW UNITED INDUSTRIES A Division of Mestek, Inc.				
450 RIVERSIDE DRIVE - P.O. BOX 69 WYALUSING, PA 18853 PHONE 570-746-1888; FAX 570-746-9286				
EA-22 TEST LOUVER ARCHITECTURAL LOUVER SECTIONS & DETAILS				
CKD. BY	APPD. BY	W.W.S.	SHEET: 3 of 7	
DRN. BY	W.W.S.	DWG. NO.	35972-4	
DATE	06-16-00	REV.	C	



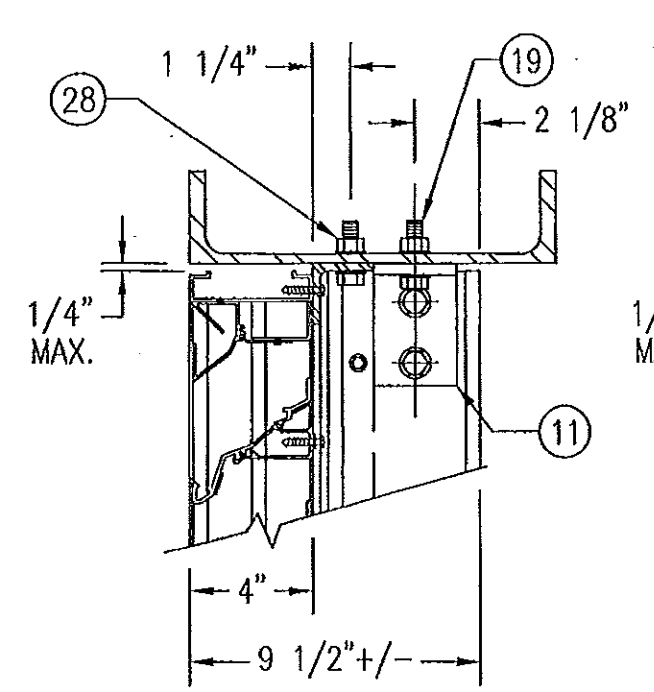
WOOD FRAMED OPENING

SEE "DETAIL 3A & 3B" FOR LOUVER BLADE DETAILS
 NOTE: STANDARD HEADER (ITEMS #1A & 2) IS SHOWN IN THIS VIEW. 1-PIECE HEADER (ITEM 1C) ALSO APPLIES.



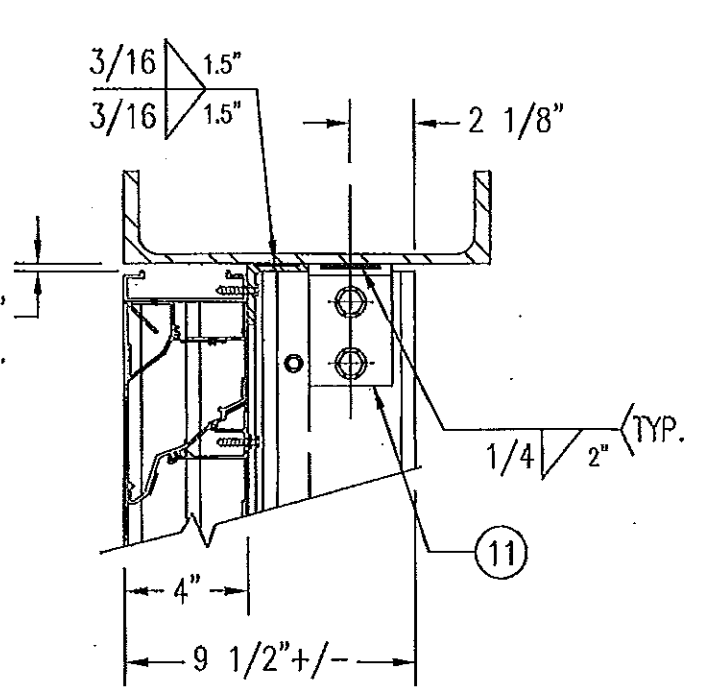
CONCRETE HEAD

SEE "WOOD OPENING" FOR DETAIL NOT SHOWN
 (MASONRY ACCEPTABLE AT SIDES ONLY AND MAY NOT BE USED AT HEAD OR SILL)



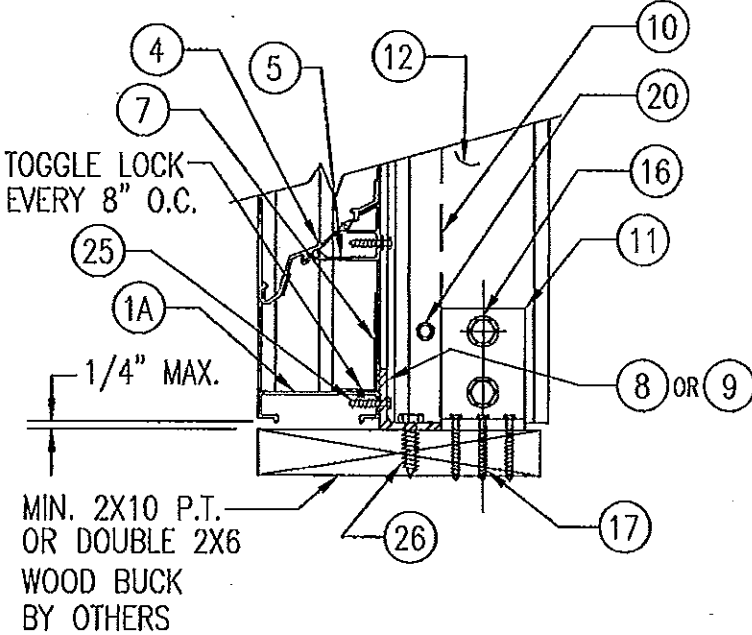
STEEL FRAME OPENING (BOLTED)

SEE "WOOD OPENING" FOR DETAIL NOT SHOWN



STEEL FRAME OPENING (WELDED)

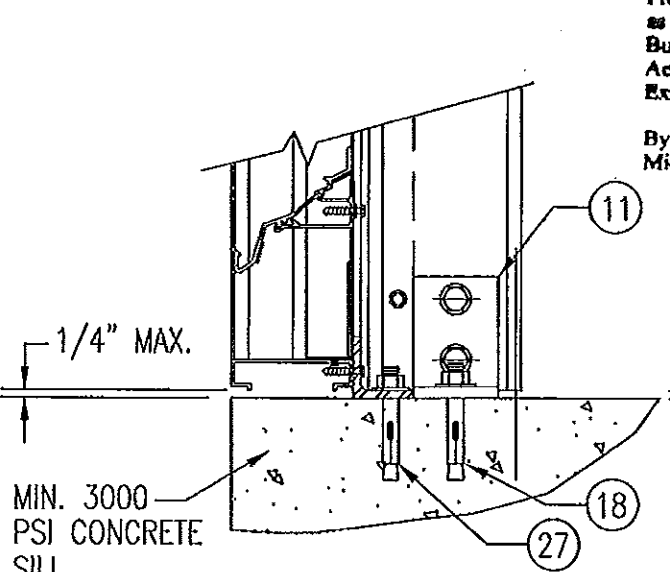
SEE "WOOD OPENING" FOR DETAIL NOT SHOWN



WOOD FRAMED OPENING

SEE "DETAIL 3A & 3B" FOR LOUVER BLADE DETAILS
 NOTE: STANDARD SILL (ITEM #1A) IS SHOWN IN THIS VIEW. SLOPED SILL (ITEM 1B) ALSO APPLIES.

MASONRY MAY ONLY BE USED AT SIDES OF LOUVER PANELS & MAY NOT BE USED AT THE HEAD OR SILL.

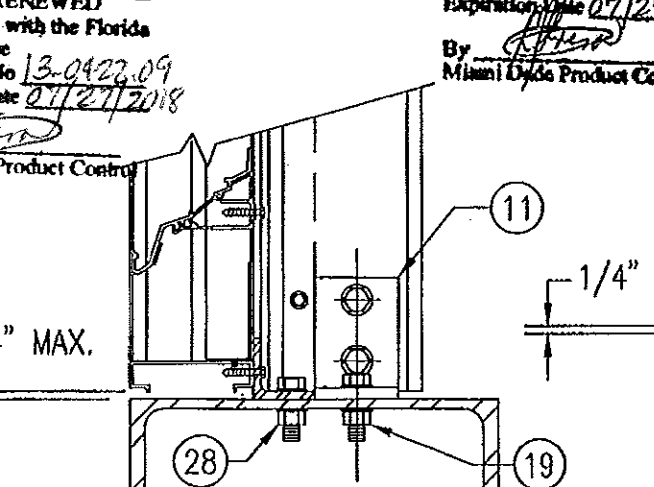


CONCRETE SILL

SEE "WOOD OPENING" FOR DETAIL NOT SHOWN
 (MASONRY ACCEPTABLE AT SIDES ONLY AND MAY NOT BE USED AT HEAD OR SILL)

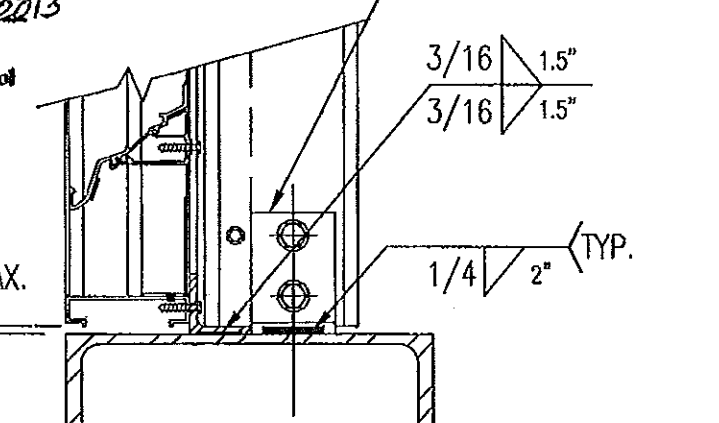
DETAIL 4
 SCALE: 2"=1'-0"
 PRODUCT RENEWED as complying with the Florida Building Code Acceptance No 13-0422-09 Expiration Date 07/27/2018
 By [Signature] Miami Dade Product Control

DETAIL 5
 SCALE: 2"=1'-0"
 PRODUCT RENEWED as complying with the Florida Building Code Acceptance No 13-0422-09 Expiration Date 07/27/2018
 By [Signature] Miami Dade Product Control



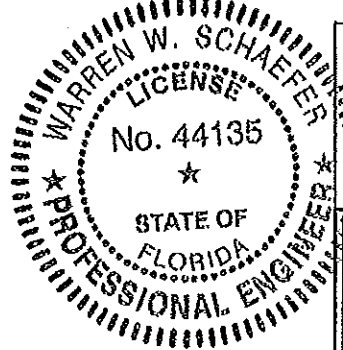
STEEL FRAME OPENING (BOLTED)

SEE "WOOD OPENING" FOR DETAIL NOT SHOWN



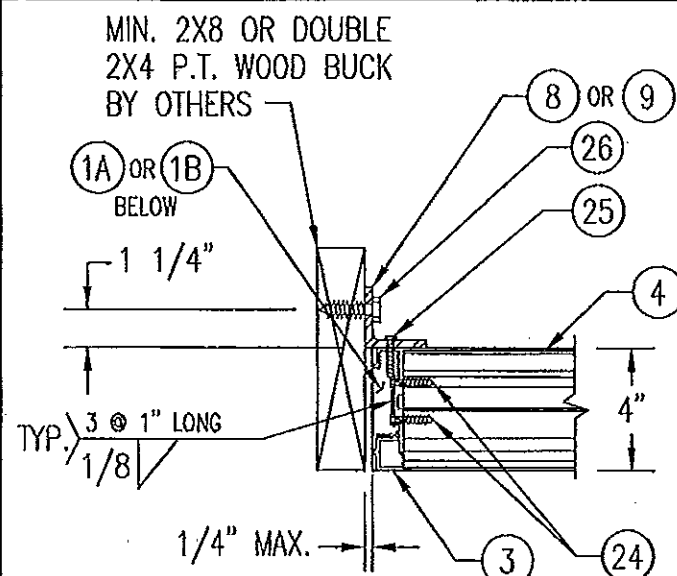
STEEL FRAME OPENING (WELDED)

SEE "WOOD OPENING" FOR DETAIL NOT SHOWN

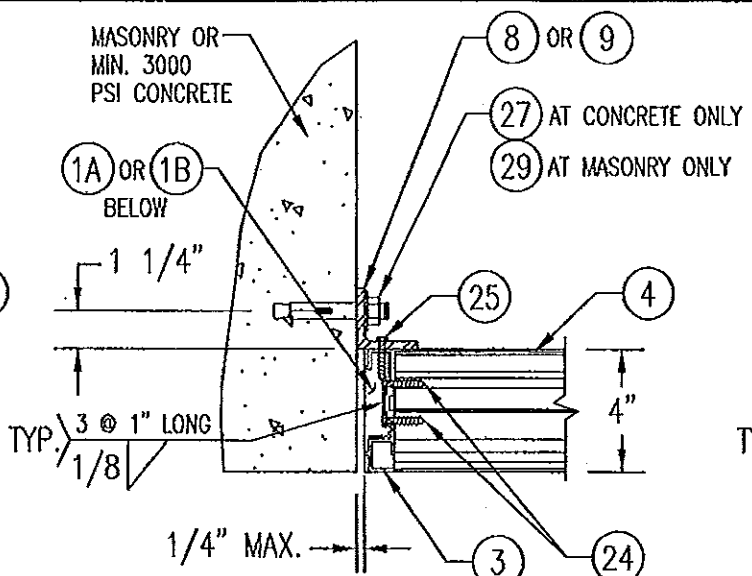


NOV 08 2011
 WARREN W. SCHAEFER, P.E.
 STRUCTURAL ENGINEER
 P.E. No. 44135
 W. W. SCHAEFER ENGINEERING & CONSULTING, P.A. (CA 6809)
 STRUCTURAL CONSULTING ENGINEERS
 7480 150TH COURT NORTH
 PALM BEACH GARDENS, FL 33418
 PHONE: 561-744-3424

A1	BUBBLE "1A" WAS "1"; ADDED NOTES TO "WOOD FRAMED OPENING"	04/29/03	K.P.S.	W.W.S.
	REVISION	DATE	DRN	APPD
ARROW UNITED INDUSTRIES A Division of Mestek, Inc.				
450 RIVERSIDE DRIVE - P.O. BOX 69 WYALUSING, PA 18853 PHONE 570-746-1888; FAX 570-746-9286				
EA-22 TEST LOUVER ARCHITECTURAL & NON-ARCHITECTURAL LOUVER DETAILS				
CKD.BY	APPD.BY	W.W.S.	SHEET: 4 of 7	
DRN.BY	W.W.S.	DWG. NO.	35972-4	
DATE	06-16-00		REV.	C

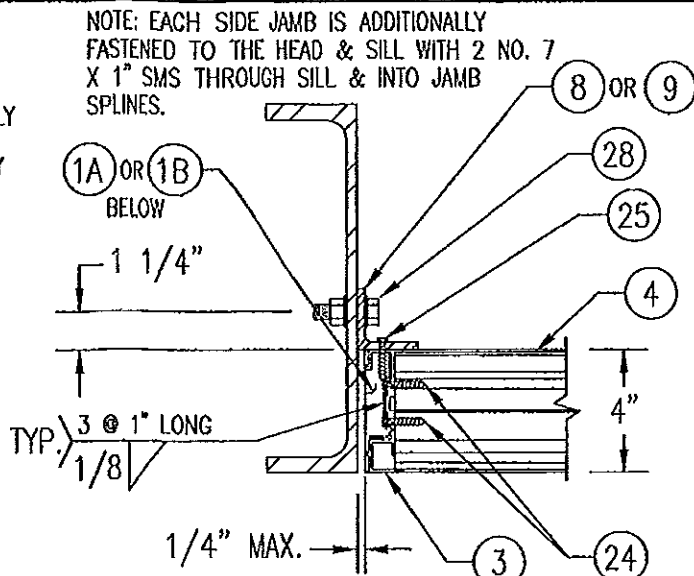


WOOD FRAMED OPENING

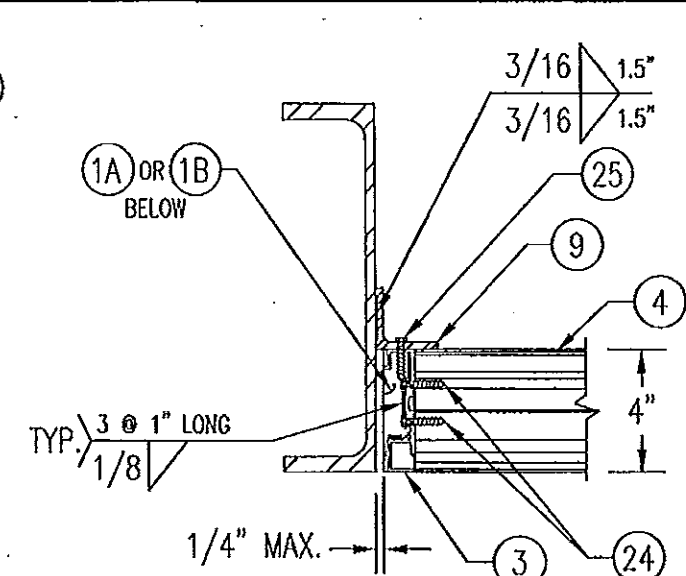


CONCRETE/MASONRY OPENING

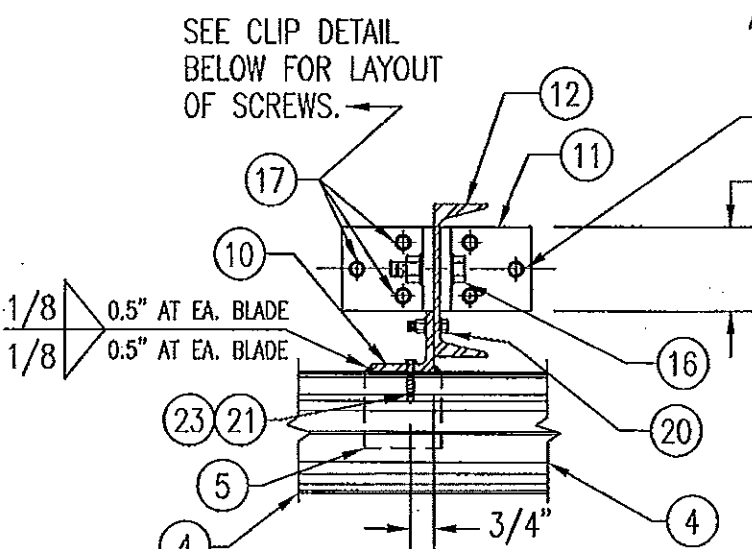
(MASONRY ACCEPTABLE AT SIDES ONLY AND MAY NOT BE USED AT HEAD OR SILL)



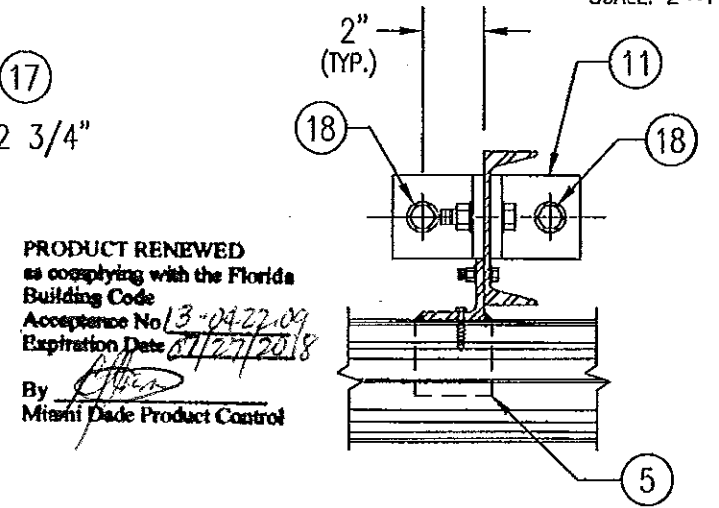
STEEL FRAME OPENING (BOLTED)



STEEL FRAME OPENING (WELDED)

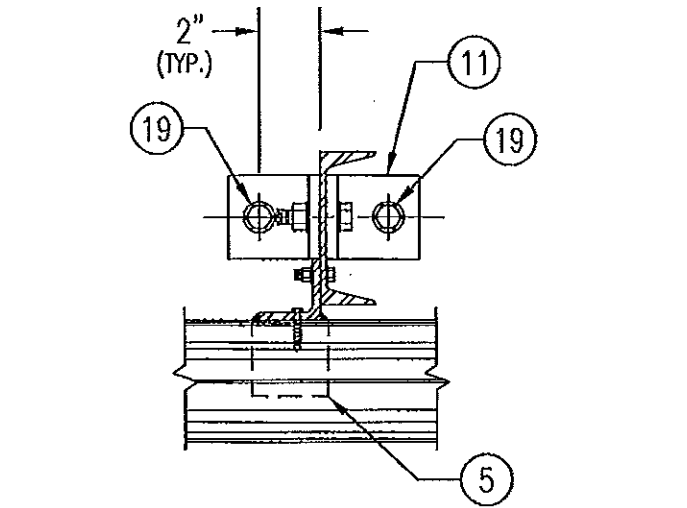


WOOD FRAMED OPENING



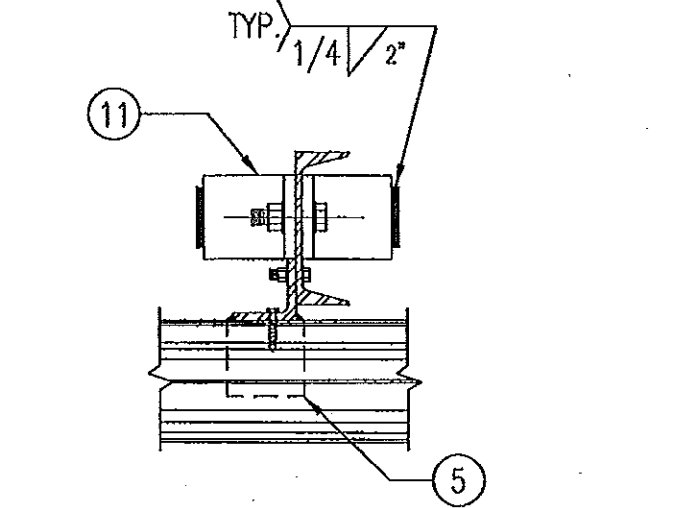
CONCRETE SILL & HEAD

SEE "WOOD OPENING" FOR DETAIL NOT SHOWN (MASONRY ACCEPTABLE AT SIDES ONLY AND MAY NOT BE USED AT HEAD OR SILL)



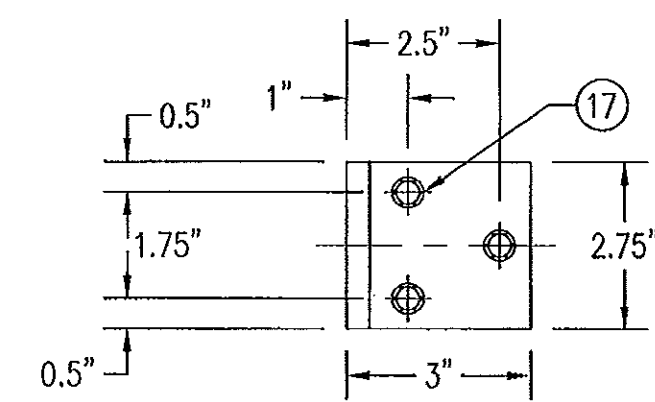
STEEL FRAME OPENING (BOLTED)

SEE "WOOD OPENING" FOR DETAIL NOT SHOWN



STEEL FRAME OPENING (WELDED)

SEE "WOOD OPENING" FOR DETAIL NOT SHOWN



MULLION CLIP DETAIL @ WOOD INSTALLATION

MASONRY MAY ONLY BE USED AT SIDES OF LOUVER PANELS & MAY NOT BE USED AT THE HEAD OR SILL.

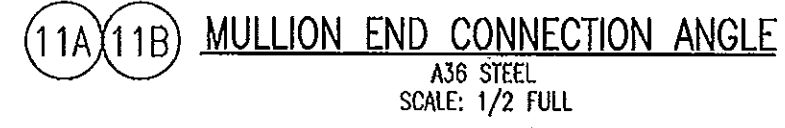
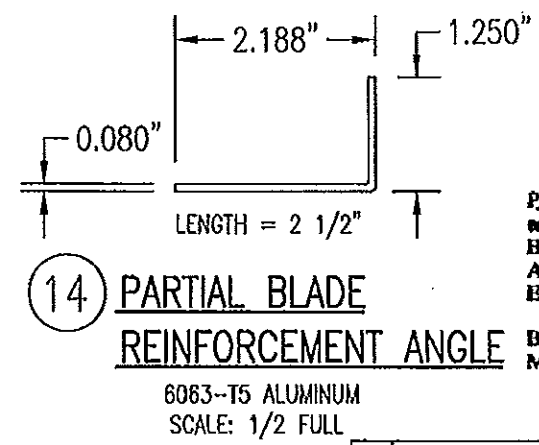
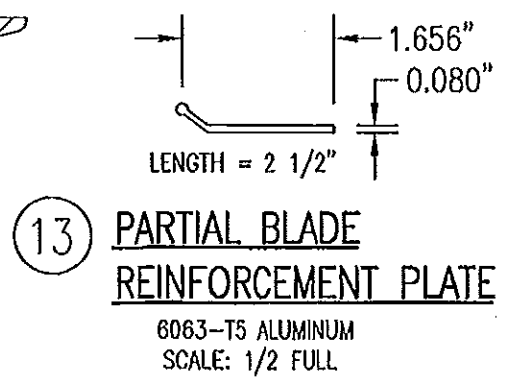
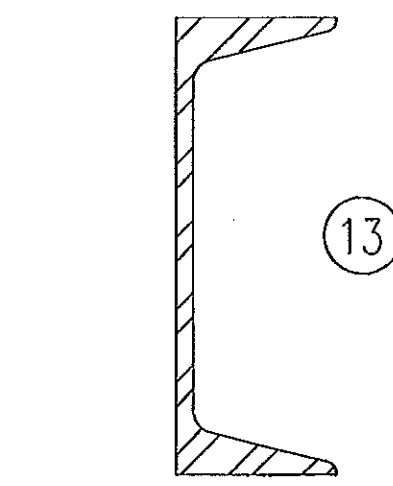
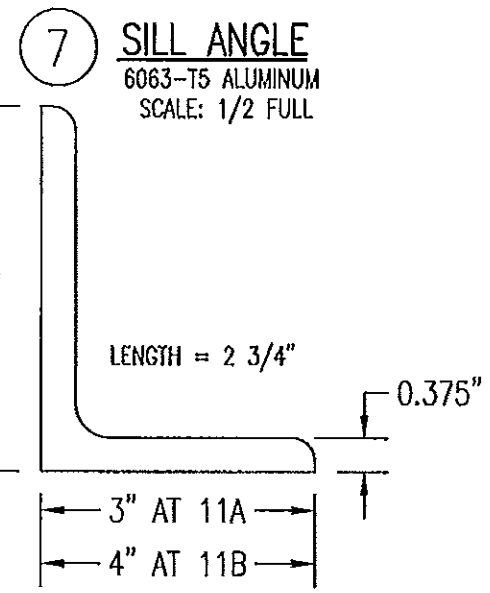
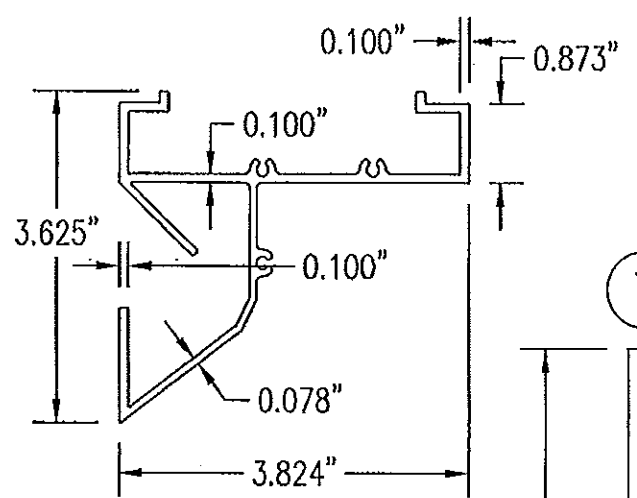
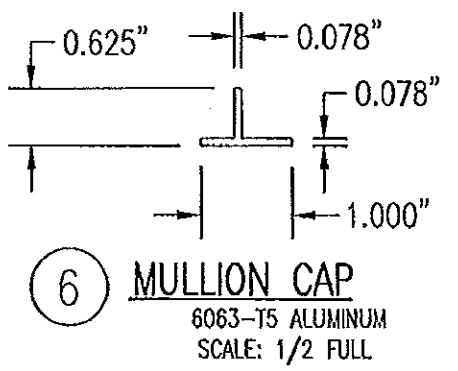
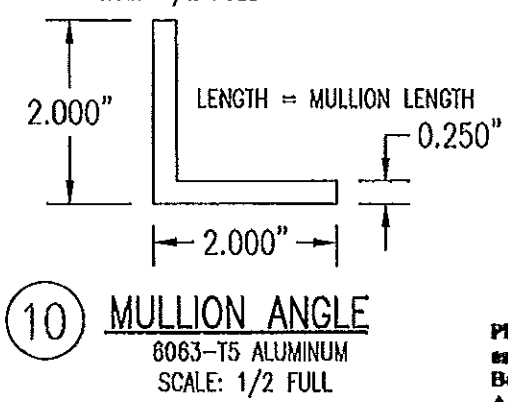
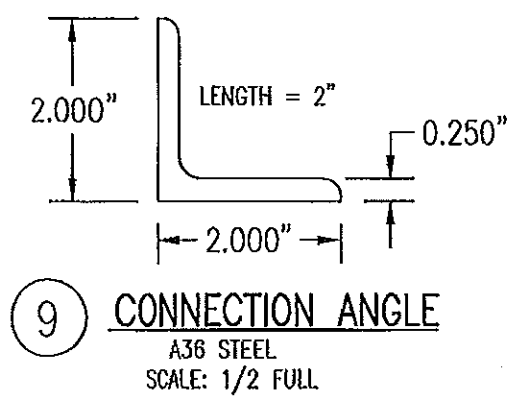
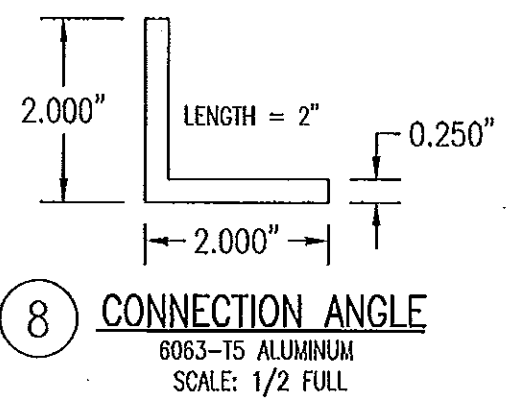
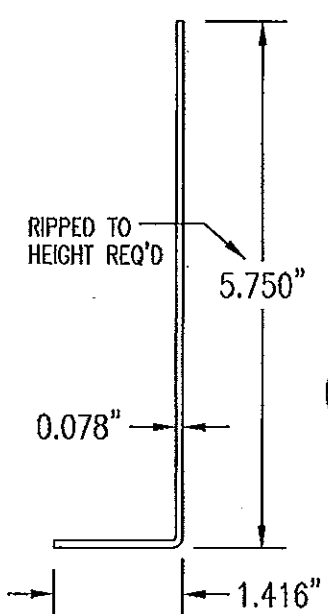
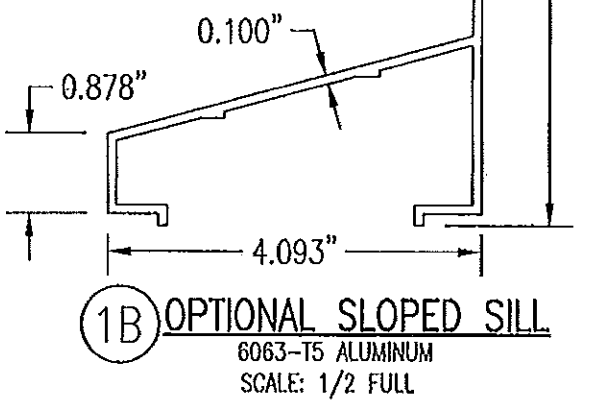
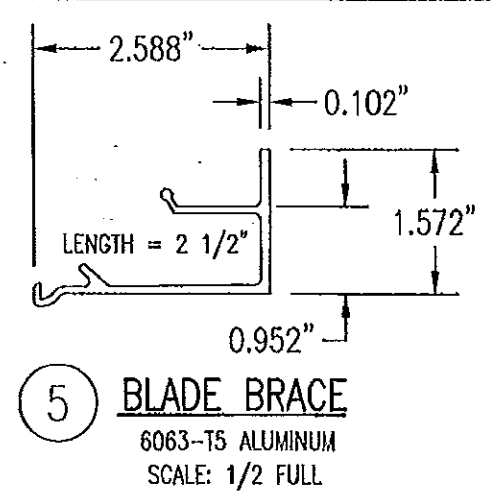
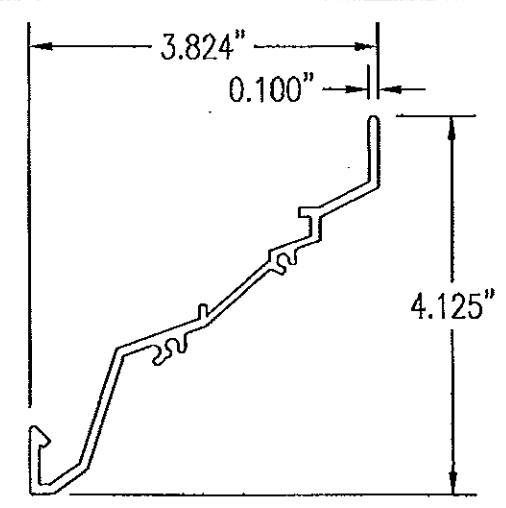
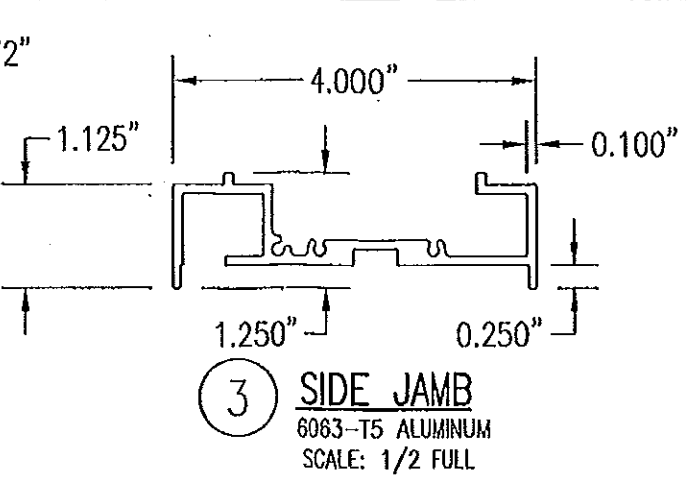
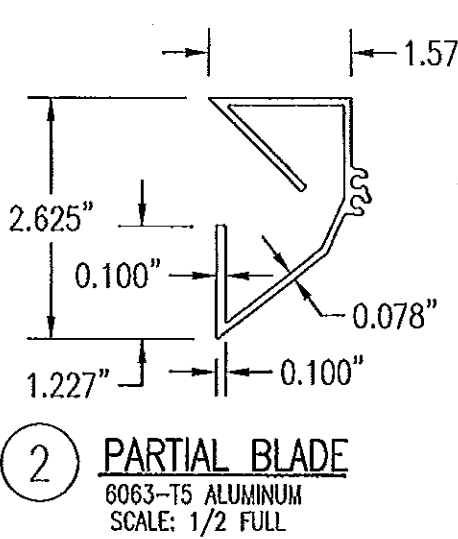
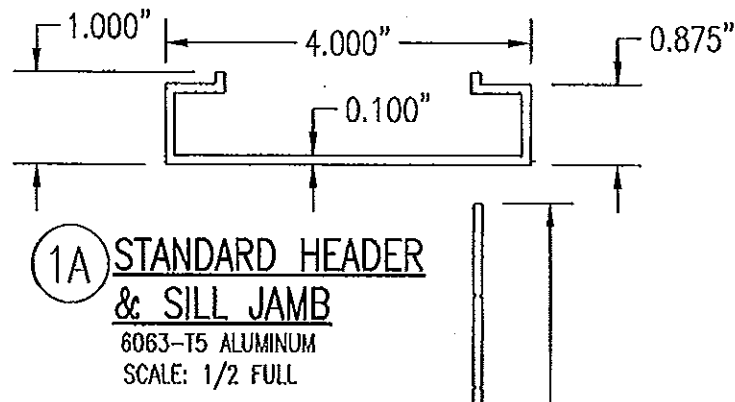
DETAIL 7
SCALE: 2"=1'-0"

PRODUCT REVISED
as complying with the Florida Building Code
Acceptance No. 11-1117-07
Expiration Date 07/27/2013
By *[Signature]*
Miami Dade Product Control



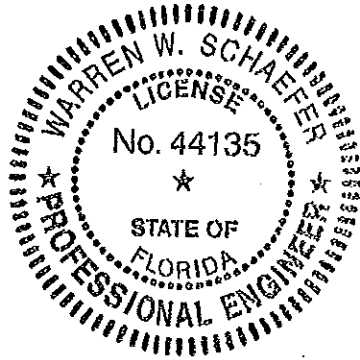
NOV 08/2011
WARREN W. SCHAEFER, P.E.
STRUCTURAL ENGINEER
P.E. No. 44135
W. W. SCHAEFER ENGINEERING & CONSULTING, P.A. (CA 6809)
STRUCTURAL CONSULTING ENGINEERS
7480 150TH COURT NORTH
PALM BEACH GARDENS, FL 33418
PHONE: 561-744-3424

A1	BUBBLE "1A" WAS "1"	04/29/03	K.P.S.	W.W.S.
	REVISION	DATE	DRN	APPD
ARROW UNITED INDUSTRIES A Division of Mestek, Inc.				
450 RIVERSIDE DRIVE - P.O. BOX 89 WYALUSING, PA 18853 PHONE 570-746-1888; FAX 570-746-9286				
EA-22 TEST LOUVER ARCHITECTURAL & NON-ARCHITECTURAL LOUVER DETAILS				
CKD.BY	APPD.BY	W.W.S.	SHEET: 5 of 7	
DRN.BY	W.W.S.	DWG. NO.	REV.	
DATE	06-16-00	35972-4	C	



PRODUCT RENEWED
 as complying with the Florida
 Building Code
 Acceptance No 13-0422-09
 Expiration Date 07/27/2018
 By *[Signature]*
 Miami/Dade Product Control

PRODUCT REVISION
 as complying with the Florida
 Building Code
 Acceptance No 11-1117-07
 Expiration Date 07/27/2013
 By *[Signature]*
 Miami/Dade Product Control



NOV 08 2011
 WARREN W. SCHAEFER, P.E.
 STRUCTURAL ENGINEER
 P.E. No. 44135
 W. W. SCHAEFER ENGINEERING
 & CONSULTING, P.A. (CA 6809)
 STRUCTURAL CONSULTING ENGINEERS
 7480 150TH COURT NORTH
 PALM BEACH GARDENS, FL 33418
 PHONE: 561-744-3424

A1	ITEM "1A" WAS "1"; ADDED ITEMS "1B" & "1C"	04/29/03	K.P.S.	W.W.S.
	REVISION	DATE	DRN	APPD
			CK	
ARROW UNITED INDUSTRIES A Division of Mestek, Inc.				
450 RIVERSIDE DRIVE - P.O. BOX 89 WYALUSING, PA 18853 PHONE 570-746-1888; FAX 570-746-9286				
EA-22 TEST LOUVER ARCHITECTURAL & NON-ARCHITECTURAL LOUVER PARTS & EXTRUSIONS				
CKD.BY	APPD.BY W.W.S.	SHEET: 6 of 7		
DRN.BY W.W.S.	DWG. NO.	REV.		
DATE 06-16-00	35972-4	C		

ALLOWABLE WIND PRESSURE VS. JAMB CLIP SPACING AND PANEL WIDTH			
PANEL WIDTH (INCHES)	CLIP SPACING (INCHES)	ALLOWABLE PRESSURE WITH MID SPAN MULLION (PSF)	ALLOWABLE PRESSURE WITHOUT MID SPAN MULLION (PSF)
16	8	150	150
	12	150	150
	16	150	140
	20	150	105
	24	150	70
20	8	150	150
	12	150	140
	16	150	112
	20	150	84
	24	150	56
24	8	150	140
	12	150	117
	16	150	93
	20	150	70
	24	125	47
28	8	150	82
	12	150	68
	16	150	54
	20	150	41
	24	107	27
30	8	150	62
	12	150	52
	16	150	41
	20	140	31
	24	93	-
36	8	150	-
	12	150	-
	16	150	-
	20	125	-
	24	83	-
42	8	150	-
	12	150	-
	16	142	-
	20	107	-
	24	71	-
48	8	150	-
	12	150	-
	16	125	-
	20	93	-
	24	62	-
54	8	150	-
	12	138	-
	16	111	-
	20	83	-
60	8	150	-
	12	125	-
	16	100	-
	20	75	-
	24	50	-

MATERIAL LIST		
NO.	DESCRIPTION	NOTES/SPECIFICATIONS
PARTS/EXTRUSIONS		
1A	STANDARD HEADER & SILL JAMB	6063-T5 ALUMINUM
1B	OPTIONAL SLOPED SILL	6063-T5 ALUMINUM
1C	OPTIONAL 1-PIECE HEADER	6063-T5 ALUMINUM
2	PARTIAL BLADE & HEAD	6063-T5 ALUMINUM
3	SIDE JAMB	6063-T5 ALUMINUM
4	LOUVER BLADE	6063-T5 ALUMINUM
5	BLADE SUPPORT BRACKET (2 1/2" LONG)	6063-T5 ALUMINUM
6	MULLION CAP	6063-T5 ALUMINUM; FULL LENGTH OF MULLION JAMBS
7	SILL ANGLE	6063-T5 ALUMINUM; FULL WIDTH OF PANEL
8	L2X2X1/4 JAMB CONNECTION ANGLE 2" LONG	6063-T5 ALUMINUM; WITHIN 4" OF JAMB ENDS & SPACED PER LOAD TABLE ON SHT. 2
9	L2X2X1/4 OPTIONAL JAMB CONNECTION ANGLE 2" LONG	A36 STEEL; WITHIN 4" OF JAMB ENDS & SPACED PER LOAD TABLE ON SHT. 2
10	L2X2X1/4 CONTINUOUS MULLION CONNECTION ANGLE	6063-T5 ALUMINUM; FULL LENGTH OF CHANNEL MULLION
11	L4X3X3/8 MULLION END CONNECTION ANGLE 2 3/4" LONG	A36 STEEL; 2 PER MULLION END
12	C5X6.7 MULLION	A36 STEEL; FULL HEIGHT OF PANELS
13	PARTIAL BLADE REINFORCEMENT PLATE (2 1/2" LONG)	6063-T5 ALUMINUM
14	PARTIAL BLADE REINFORCEMENT ANGLE (2 1/2" LONG)	6063-T5 ALUMINUM
15	OPEN	
FASTENERS		
16	1/2" X 2" A307 HEX HEAD PLATED STEEL OR S/STL BOLT	WITH FLAT WASHERS, LOCK WASHER & NUT; 2 PER MULLION END
17	NO. 14 S.S. SMS SCREWS	3 PER MULLION END CLIP WITH MIN. 1 1/2" WOOD EMBED
18	5/8" X 2 1/4" SLEEVE ANCHOR WITH FLAT WASHER	USA KINGPIN ANCHOR; 1 PER CHANNEL END CONNECTION ANGLE INTO CONCRETE ONLY
19	1/2" X 2" A307 HEX HEAD PLATED STEEL OR S/STL BOLT	WITH FLAT WASHERS, LOCK WASHER & NUT; 1 PER CHANNEL END CONNECTION ANGLE INTO STEEL FRAME
20	5/16-18 UNC X 1 1/2" HEX HEAD STEEL OR S/STL BOLT	WITH FLAT WASHER, LOCK WASHER & NUT; WITHIN 4" OF MULLION ENDS & MAX. 8" O.C.
21	NO. 8 X 3/4" SMS SCREW	1 AT EACH LOUVER BLADE SUPPORT BRACKET AT ARCHITECTURAL MAIN MULLIONS & ALL MID-SPAN MULLIONS
22	NO. 14 X 1 1/4" HILTI TEK SCREW	WITHIN 3/4" OF MULLION ENDS & MAX. 4" O.C. INTO FRAME
23	NO. 14 X 1" SMS SCREW	1 AT EACH LOUVER BLADE AT ALL ARCHITECTURAL MAIN MULLIONS & ALL MID-SPAN MULLIONS
24	NO. 7 X 1" SMS SCREW	2 PER EACH LOUVER BLADE END THROUGH JAMB & INTO BLADE SPLINES
25	NO. 14 X 1 1/4" HILTI TEK SCREW	2 PER EACH HEAD, SILL & SIDE JAMB CONNECTION ANGLE
26	1/2" X 2" LAG SCREW WITH FLAT WASHER	1 PER EACH HEAD, SILL & SIDE JAMB CONNECTION ANGLE INTO WOOD FRAME
27	5/8" X 2 1/4" SLEEVE ANCHOR WITH FLAT WASHER	USA KINGPIN ANCHOR; 1 PER EACH HEAD, SILL & SIDE JAMB CONNECTION ANGLE INTO CONCRETE ONLY
28	1/2" X 2" HEX HEAD A307 PLATED STEEL OR S/STL BOLT	WITH FLAT WASHERS, LOCK WASHER & NUT; 1 PER EA. JAMB CONNECTION ANGLE INTO STEEL FRAME
29	3/8" X 1 7/8" SLEEVE ANCHOR WITH FLAT WASHER	RED HEAD DYNABOLT WITH MIN 1 1/2" BLOCK/CONCRETE EMBED (1 PER FRAME SUPPORT CLIP)
30	NO. 8 X 1/2" SMS SCREW	WITHIN 2" OF MULLION ENDS & MAX. 12" O.C. (MULLION CAP TO MULLION)
31	NO. 7 X 1" SMS SCREWS	2 PER FRAME CORNER THROUGH SILL/HEAD FRAME & INTO JAMB SPLINES

- PRESSURE TABLE NOTES:**
1. WHEN THE PANEL WIDTH IS 30" OR LESS, NO MID SPAN MULLION IS REQUIRED PROVIDING COMPLIANCE WITH THE TABLE.
 2. ALL PRESSURES IN THIS TABLE ARE FOR BOTH POSITIVE & NEGATIVE WIND PRESSURE.

PRODUCT REVISED
 as complying with the Florida Building Code
 Acceptance No. 11-1117.07
 Expiration Date 07/27/2013
 By *[Signature]*
 Miami Dade Product Control

WARREN W. SCHAEFER, P.E.
 STRUCTURAL ENGINEER
 P.E. No. 44135

W. W. SCHAEFER ENGINEERING & CONSULTING, P.A. (CA 6809)
 STRUCTURAL CONSULTING ENGINEERS
 7480 150TH COURT NORTH
 PALM BEACH GARDENS, FL 33418
 PHONE: 561-744-3424

NOV 08 2011

PRODUCT RENEWED
 as complying with the Florida Building Code
 Acceptance No. 13-0422.09
 Expiration Date 07/27/2018
 By *[Signature]*
 Miami Dade Product Control

AI	ITEM "1A" WAS "1"; ADDED ITEMS "1B" & "1C"	04/29/03	K.P.S.	W.W.S.
	REVISION	DATE	DRN	APPD

ARROW UNITED INDUSTRIES
 A Division of Mestek, Inc.
 450 RIVERSIDE DRIVE - P.O. BOX 69
 WYALUSING, PA 18853
 PHONE 570-746-1888; FAX 570-746-9286

EA-22 TEST LOUVER
ARCHITECTURAL & NON-ARCHITECTURAL LOUVER
MATERIAL LIST & LOAD TABLE

CKD.BY	APPD.BY	W.W.S.	SHEET: 7 of 7
DRN.BY	W.W.S.	DWG. NO.	35972-4
DATE	06-16-00		REV: C